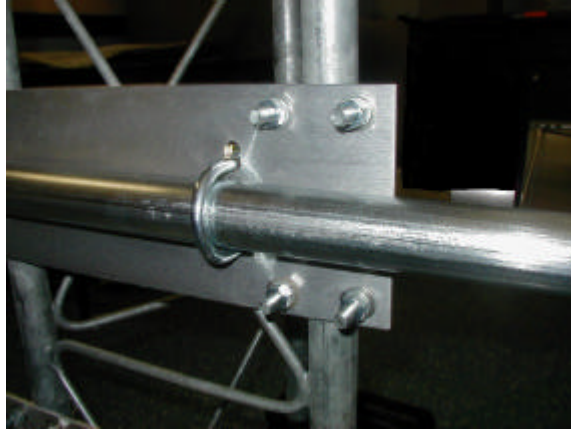


Rohn 45G Boom

Mounting plate, 3/8-16 U-bolts, front view

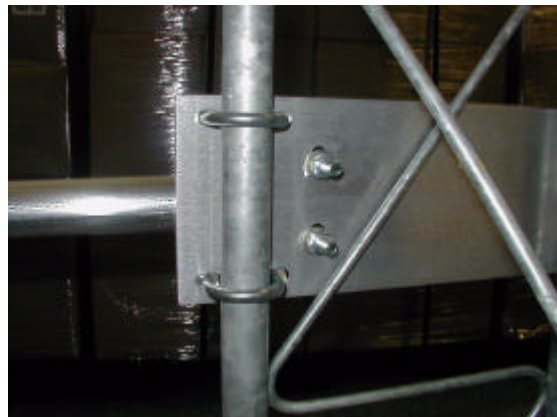
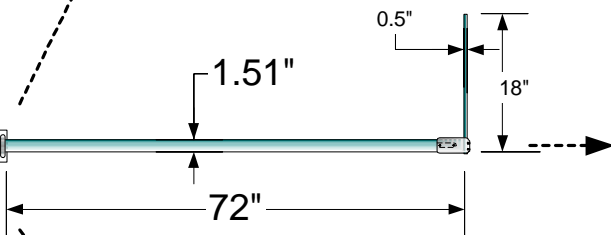
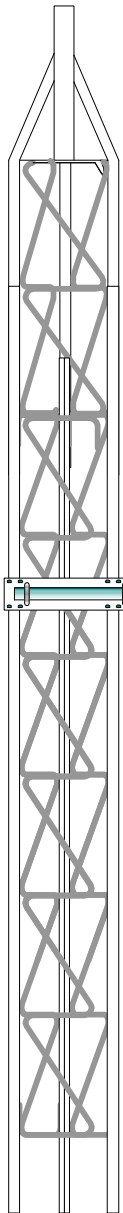


Boom end fitting



1/4-20 Set screws, (1/8" hex) secure vertical stub mast.

3/8-16 Set screws, (3/16" hex) secure boom end fitting to steel tube.



Mounting plate, 3/8-16 U-bolts, rear view

| | | | | |
|--|---|---------|---|----------|
| FULL FILENAME | Project: NOMAD Boom Accessory | | | |
| P:\Production_Documentation\ Nomad2\Booms\2 | Second Wind Inc.. 366 Summer Street Somerville, MA 02144 | | | |
| DRAWN BY Ken Cohn | SIZE A | FSCM NO | DWG NO Meteorological Boom, Rohn 45G | REV A |
| Dimensions in Inches | SCALE: No Scale | 3/7/07 | SHEE | 1 OF 1 |